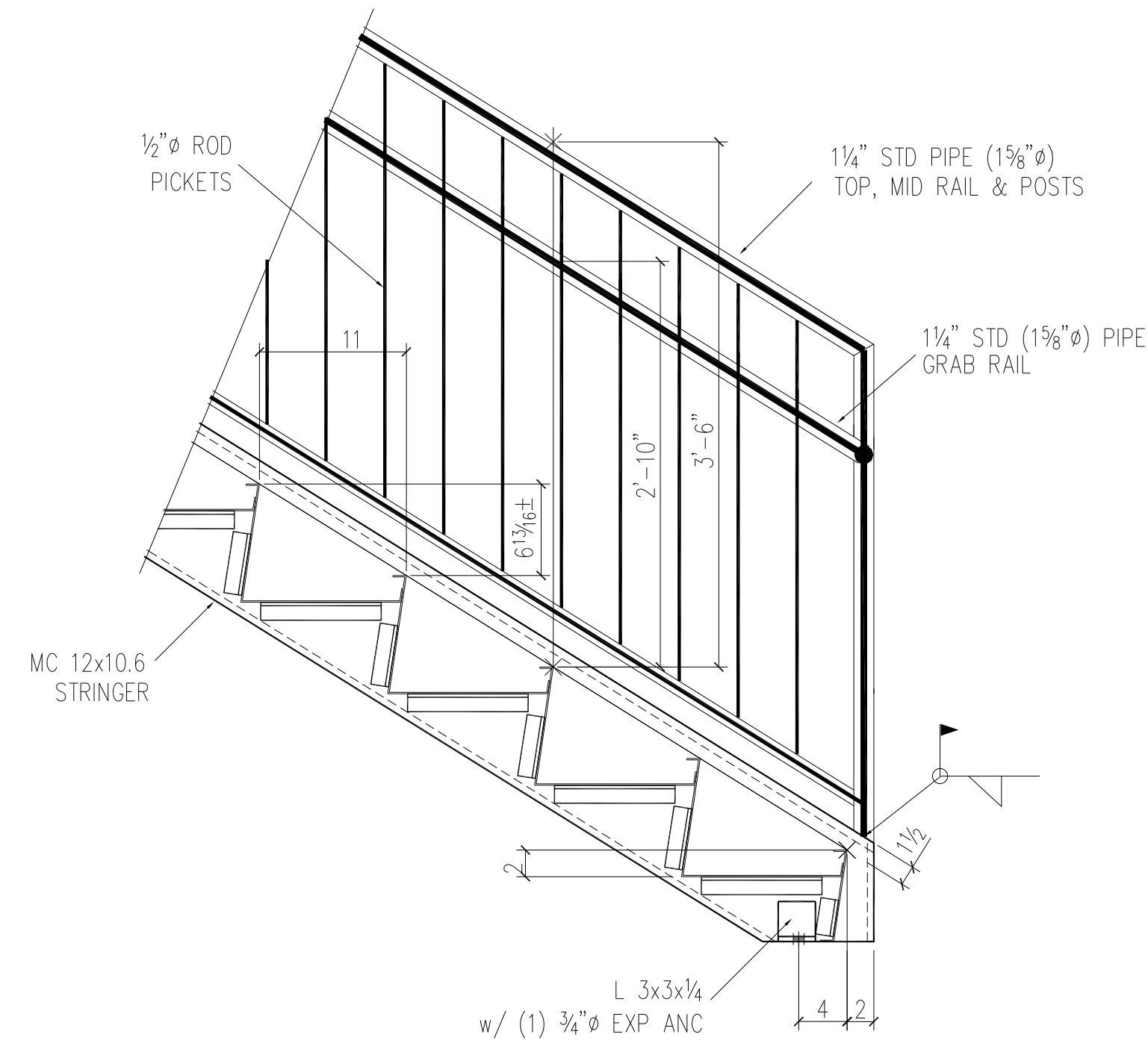
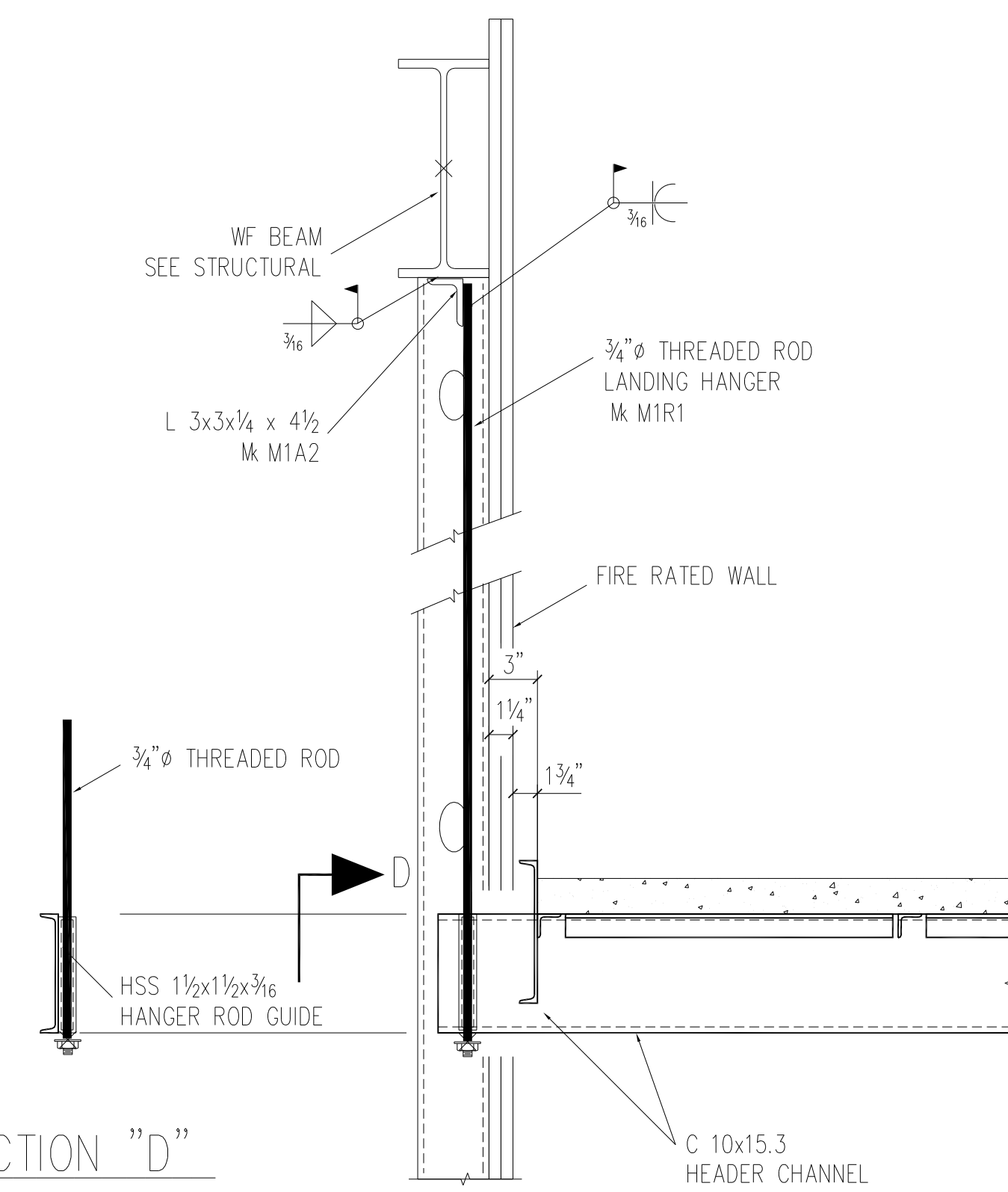


A
E3 SECTION

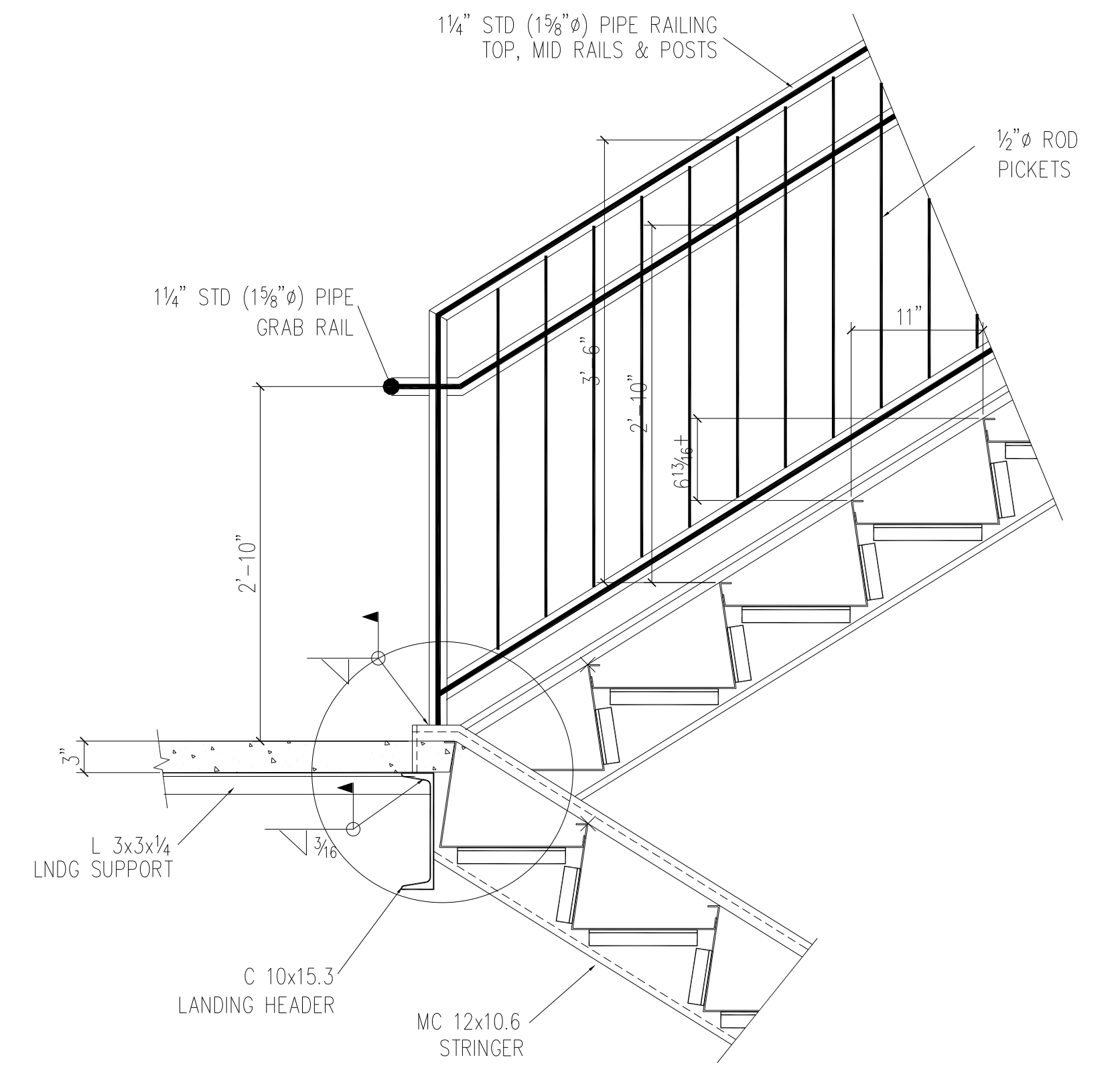


B
E3 SECTION

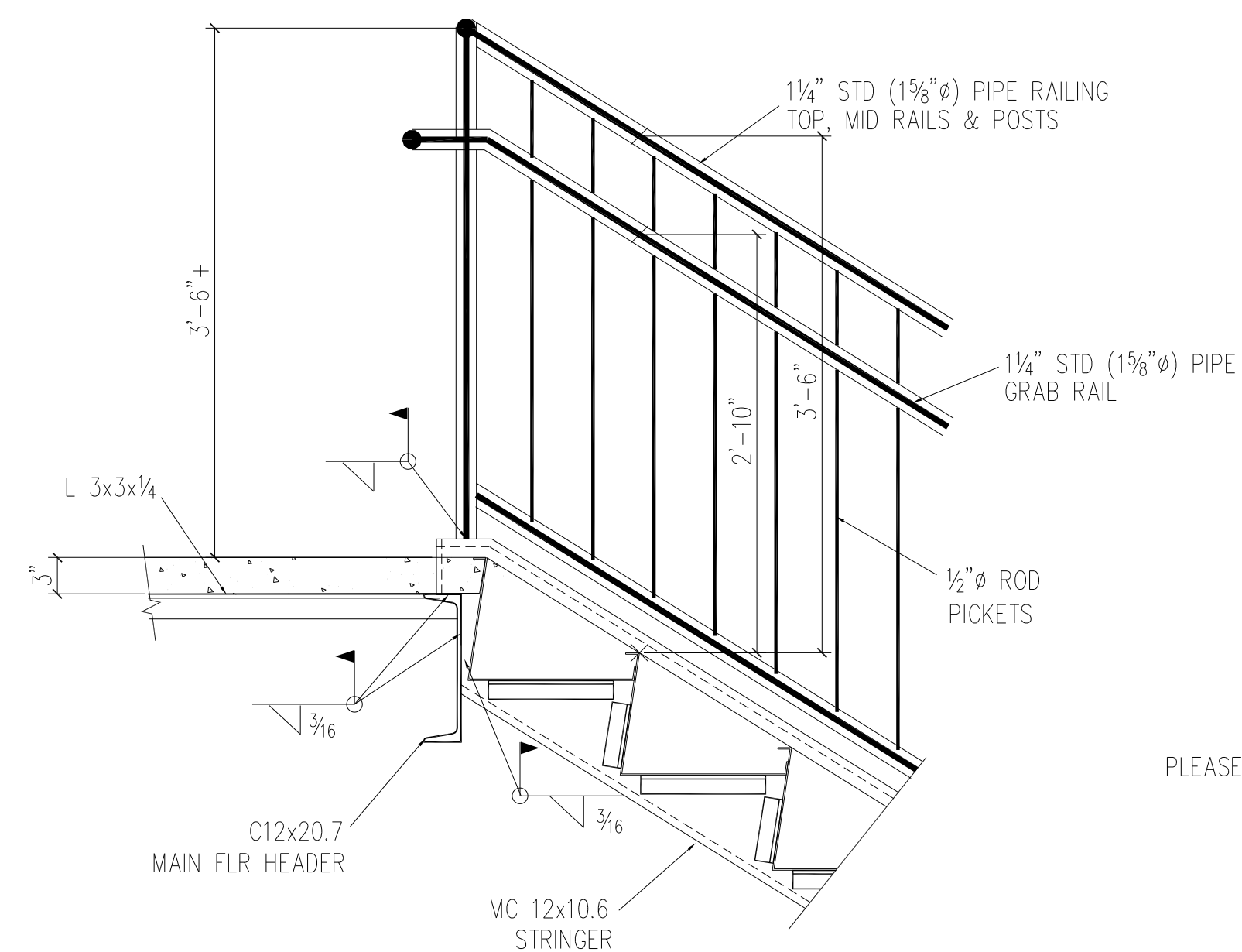


SECTION "D"

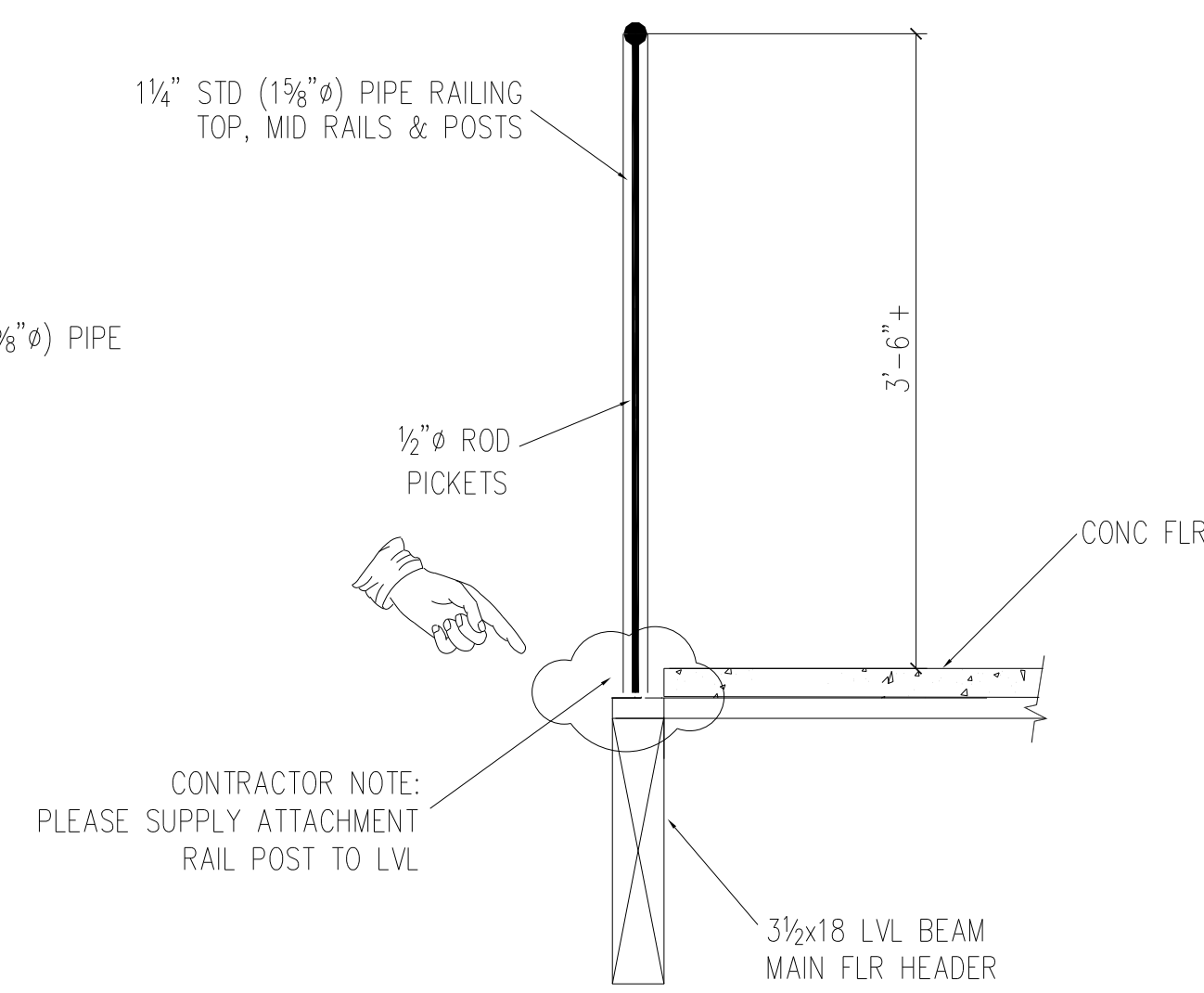
C
E3 SECTION



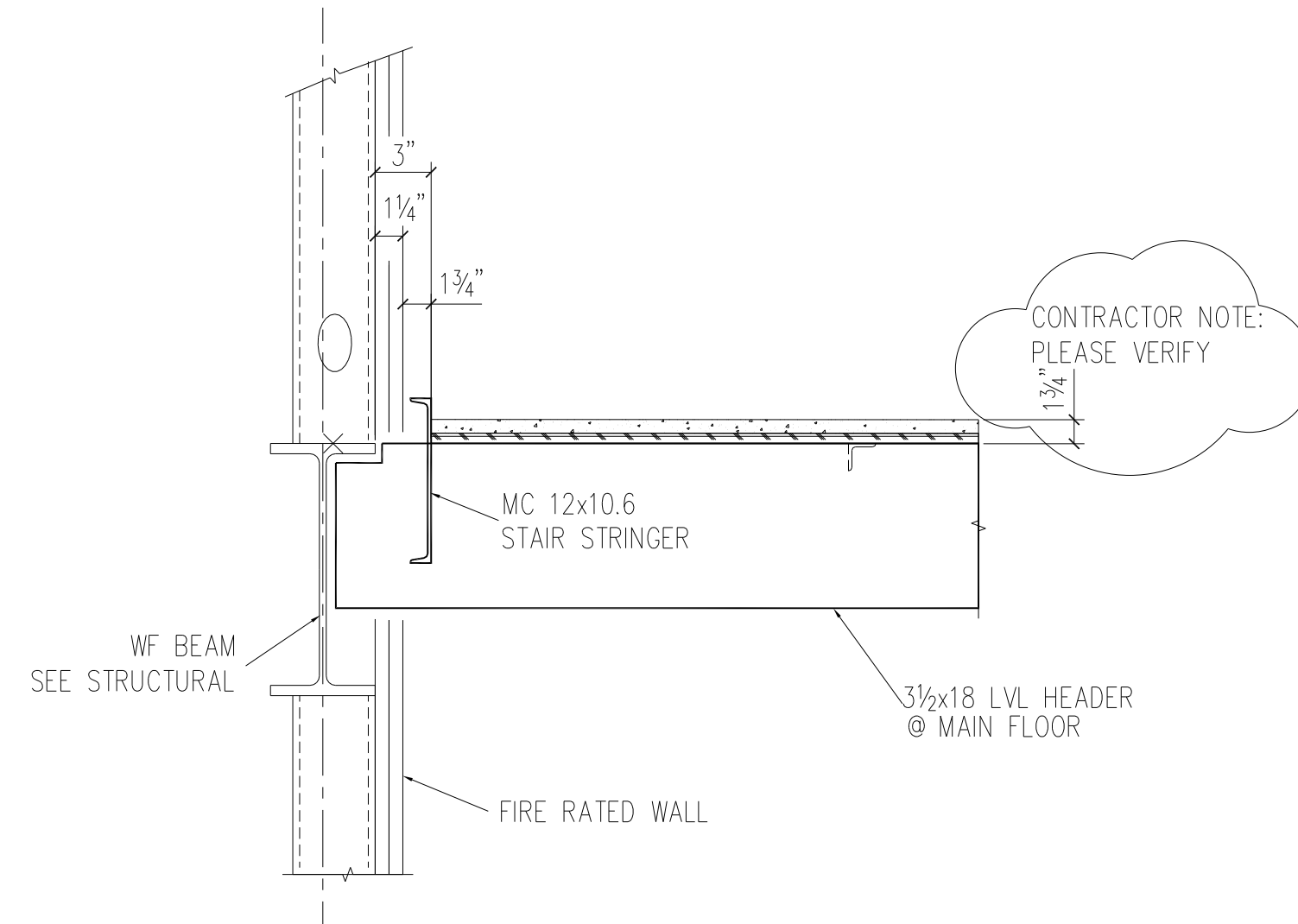
E
E3 SECTION



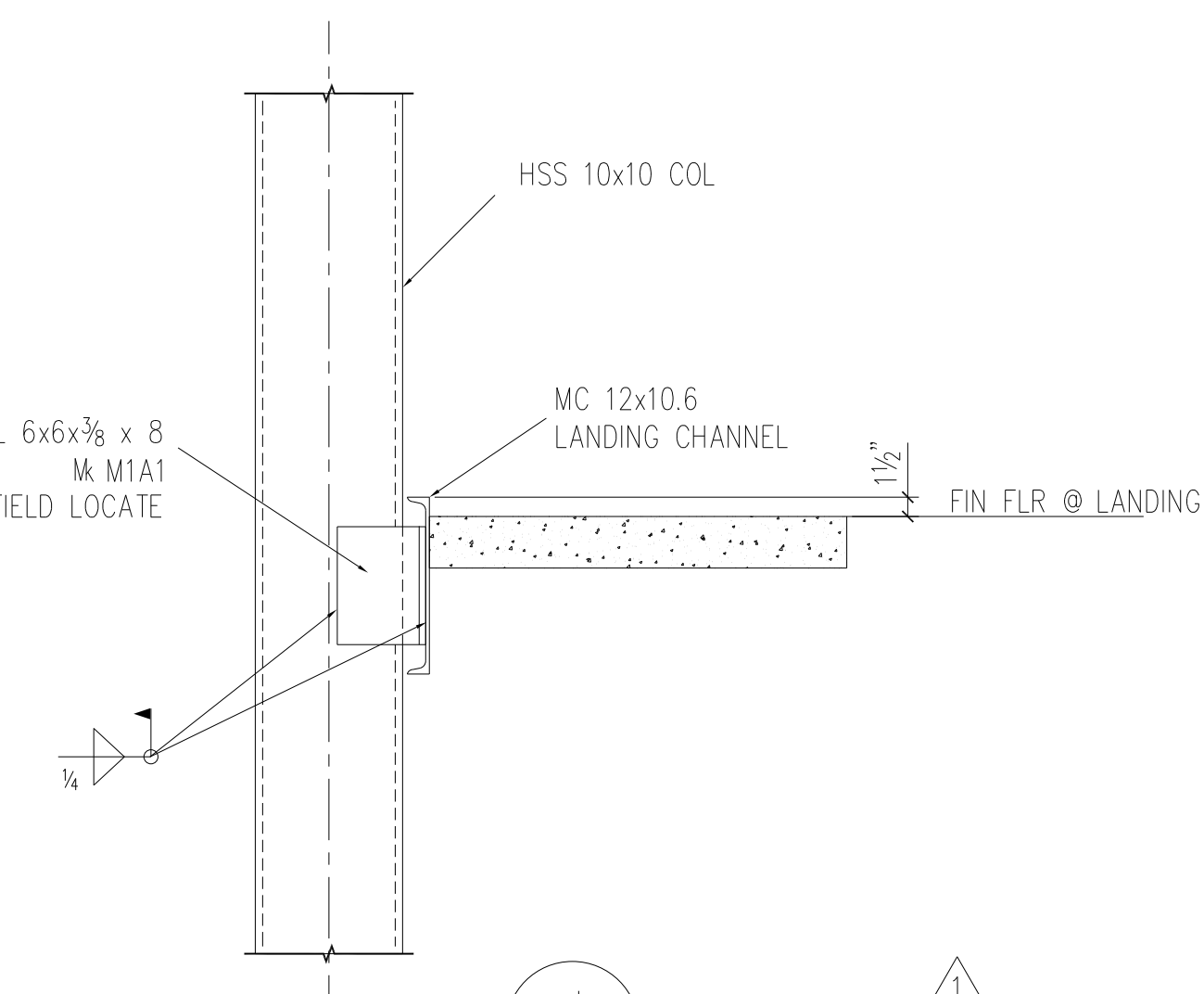
F
E3 SECTION



G
E3 SECTION



H
E3 SECTION



J
E3 SECTION

CONTRACTOR NOTE:
PLEASE VERIFY

VERIFY DIMENSION
AND/OR DETAIL

APPROVAL AUTHORITY:
VERIFICATION OF DIMENSIONS, DETAILS, ETC.
ARE REQUESTED WHERE INDICATED. IF EACH
VERIFICATION IS NOT NOTED OTHERWISE, IT
WILL BE ASSUMED TO BE CORRECT AS SHOWN.

THIS PROJECT SHALL BE ERRECTED PER THE AISC CODE OF STANDARD PRACTICE SPECIFICALLY PARAGRAPH 7.12 AS FOLLOWS:
7.12 CORRECTION OF ERRORS
NORMAL ERECTION OF OPERATIONS INCLUDE THE CORRECTION OF MINOR MISFITS BY MODERATE AMOUNTS OF REAMING, CHIPPING, WELDING OR CUTTING, AND THE DRAWING OF ELEMENTS INTO LINE THROUGH THE USE OF DRIFT PINS. ERRORS WHICH CANNOT BE CORRECTED BY THE FOREGOING MEANS OR WHICH REQUIRE MAJOR CHANGES IN MEMBER CONFIGURATIONS ARE TO BE REPORTED TO THE OWNER AND FABRICATOR BY THE ERECTOR, TO ENABLE WHOEVER IS RESPONSIBLE EITHER TO CORRECT THE ERROR OR TO APPROVE THE MOST EFFICIENT AND ECONOMIC METHOD OF CORRECTION TO BE USED BY OTHERS.
NO BACKCHARGES WILL BE ACCEPTED UNLESS APPROVED IN WRITING BY THIS OFFICE

REVISIONS	BY	DATE	DESCRIPTION
3			
2			
1	SRB	7-11	CHG / ADD DETAILS

NOTES:

PAIN	ONE STD SC RIP
CLEANING	
MATERIAL GRADE	A36 (UNO)
HOLES	13/16 U.N.O.

E. Z. BREEZE
253 SHERWOOD DRIVE
McMINNVILLE, TN. 37110

STRUCTURE	COUNTRY INN & SUITES			
LOCATION	ORANGEBURG, SC			
DETAIL	STAIR DETAILS / SECTIONS			
CUSTOMER				
ENGR OR ARCH	CONSTANTINE ARCHITECTS			
DRAWN	SRB	SHOP ORDER	SHEET NO.	REV
DATE	6-1		E3	1
CHECKER	SGL			
DATE	6-1			