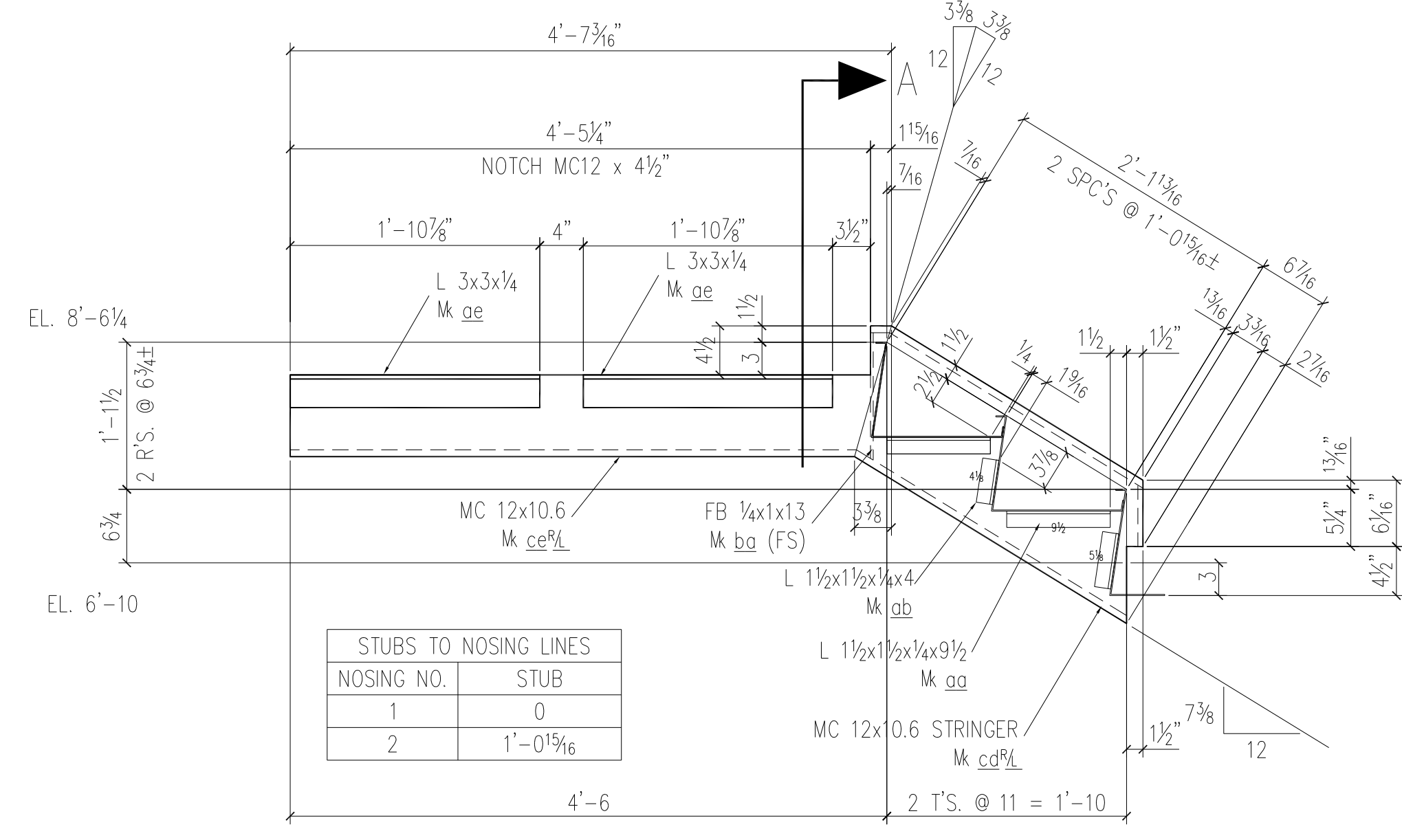
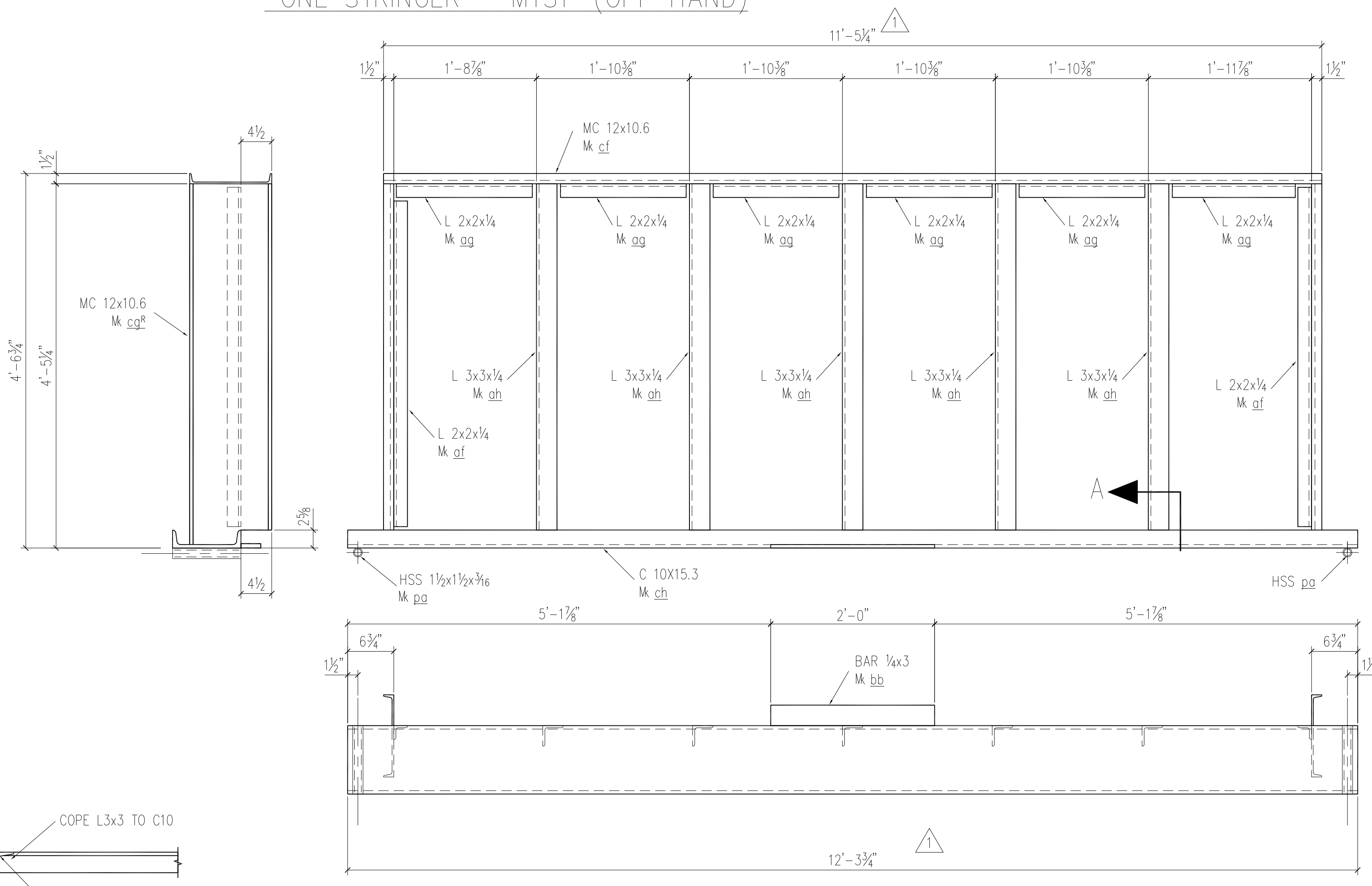


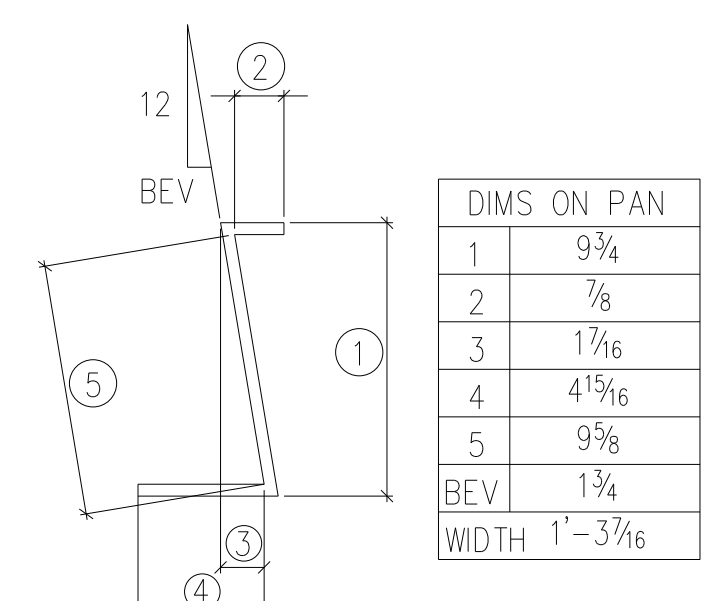
ONE STRINGER - M1S1R (AS SHOWN)
ONE STRINGER - M1S1L (OPP HAND)



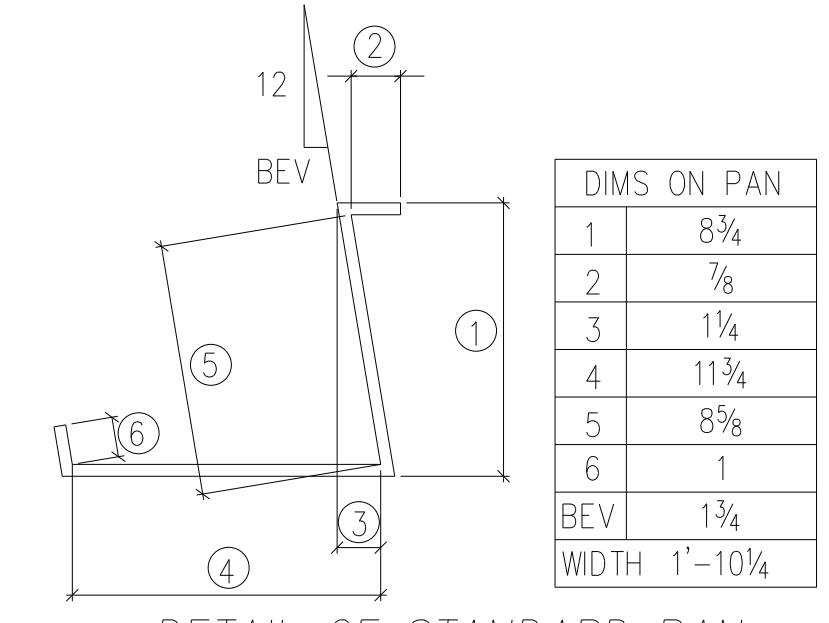
ONE STRINGER - M1S2R (AS SHOWN)
ONE STRINGER - M1S2L (OPP HAND)



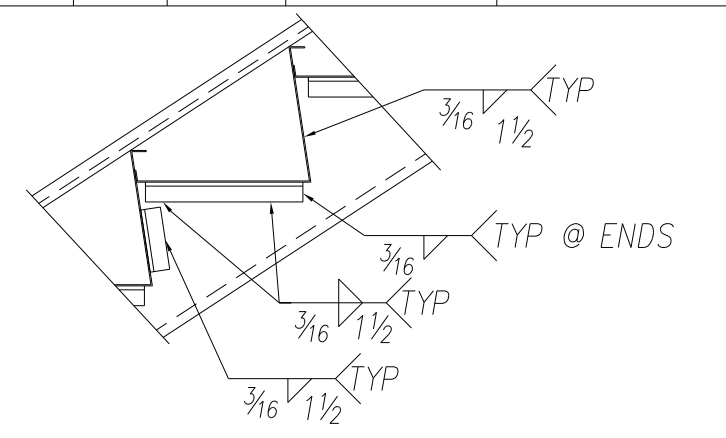
(4) LANDING FRAMES - M1F1



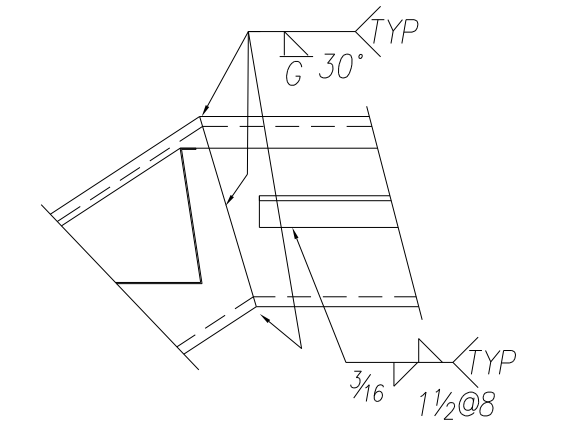
DETAIL OF BOTTOM PAN
(2) PLS REQ'D MARKED M1P1



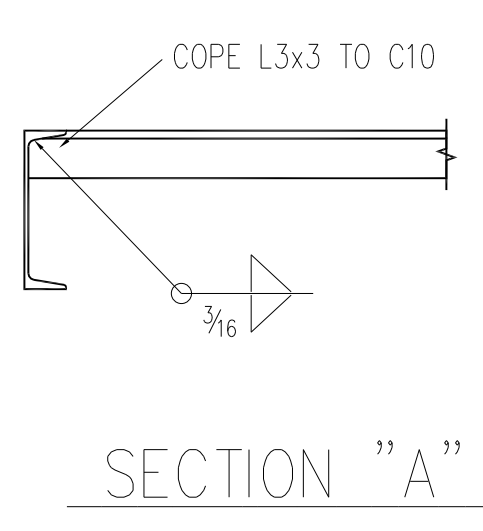
DETAIL OF STANDARD PAN
(4) PLS REQ'D MARKED M1P2



TYPICAL PAN WELDING AT ANGLE SUPPORTS



TYPICAL DETAIL AT DOGLEGS



SECTION "A"

APPROVAL AUTHORITY:
VERIFICATION OF DIMENSIONS, DETAILS, ETC. ARE REQUESTED WHERE INDICATED. IF EACH VERIFICATION IS NOT NOTED OTHERWISE, IT WILL BE ASSUMED TO BE CORRECT AS SHOWN.

VERIFY DIMENSION AND/OR DETAIL.

SHOP NOTES:
ALL STUBS ARE FROM FACE OF CLIP ANGLES
ALL HOLE SPACING 3" C/C UNLESS NOTED
ALL BLOCK SIZES FROM FACE OF CLIP ANGLES
ALL REAR ENTRANT CUTS HAVE A MINIMUM OF 1/2" RADIUS CUTS.

THIS PROJECT SHALL BE ERRECTED PER THE AISC CODE OF STANDARD PRACTICE SPECIFICALLY PARAGRAPH 7.12 AS FOLLOWS:
7.12 CORRECTION OF ERRORS
NORMAL ERECTION OF OPERATIONS INCLUDE THE CORRECTION OF MINOR MISSETS BY MODERATE AMOUNTS OF REAMING, CHIPPING, WELDING OR CUTTING, AND THE DRAWING OF ELEMENTS INTO LINE THROUGH THE USE OF DRIFT PINS. ERRORS WHICH CANNOT BE CORRECTED BY THE FOREGOING MEANS OR WHICH REQUIRE MAJOR CHANGES IN MEMBER CONFIGURATIONS ARE TO BE REPORTED TO THE OWNER AND FABRICATOR BY THE ERECTOR, TO ENABLE WHOEVER IS RESPONSIBLE EITHER TO CORRECT THE ERROR OR TO APPROVE THE MOST EFFICIENT AND ECONOMIC METHOD OF CORRECTION TO BE USED BY OTHERS.
NO BACKCHARGES WILL BE ACCEPTED UNLESS APPROVED IN WRITING BY THIS OFFICE

SHOP BILL

SHIP MK	PC MK	QTY	DESCRIPTION	FT	IN	REMARKS	WEIGHT
M1F1		4	LANDING FRAME				
	cf	4	MC12x10.6	11	5 1/4		484.95
	cg	4/4	MC12x10.6	4	4 1/16		374.09
	ch	4	C10x15.3	12	3 3/4		753.53
	af	8	L 2 x 2 x 1/4	4	1 1/4		106.09
	ag	24	L 2 x 2 x 1/4	1	6 3/8		117.55
	ah	20	L 3 x 3 x 1/4	4	4 1/16		450.00
	bb	4	BAR 1/2x3	2	0		20.00
	pa	8	HSS 1 1/2x1 1/2x3/16	0	10		35.00
			TOTAL WEIGHT				2343.00
M1S1R	ONE/ONE		STAIR STRINGER				
	ca	1/1	MC12x10.6	3	6 1/8		74.39
	cb	1/1	MC12x10.6	4	0 3/16		85.13
	cc	1/1	MC12x10.6	4	8 1/16		100.15
	aa	4	L 1 1/2 x 1 1/2 x 1/4	0	9 1/2		7.44
	ab	4	L 1 1/2 x 1 1/2 x 1/4	0	4 1/2		3.52
	ac	2	L 2 x 2 x 1/4	3	11 1/4		25.19
	ad	4	L 2 x 2 x 1/4	1	10 3/8		24.39
			TOTAL WEIGHT				320.21
M1S2R	ONE/ONE		STAIR STRINGER				
	cd	1/1	MC12x10.6	2	8 1/16		57.73
	ce	1/1	MC12x10.6	4	7 3/16		97.50
	aa	4	L 1 1/2 x 1 1/2 x 1/4	0	9 1/2		7.44
	ab	4	L 1 1/2 x 1 1/2 x 1/4	0	4 1/2		3.52
	ae	4	L 3 x 3 x 1/4	1	10 3/8		37.36
	ba	2	BAR 1/2 x 1	1	1		1.84
			TOTAL WEIGHT				205.39
M1P1		2	R 12 GA. x 15 1/16	4	5 1/4		50.02
M1P2		4	R 12 GA. x 22 1/4	4	5 1/4		144.20
			PLAIN MATERIAL				
M1A1		12	L 6x6x3/8	0	8		85.00
M1R1		12	3/4" THREADED ROD	4	10		84.00
M1A2		12	L 3x3x1/4	0	4 1/2		24.00
M1A3		12	L 3x3x1/4	4	6 3/8		24.00

REVISIONS	BY	DATE	DESCRIPTION
3	SRB	7-16	CHG STAIR PAN LENGTH
2	SRB	7-11	DIM CHGS; ELEV CHGS; ADD BOM
1	SRB	7-11	DIM CHGS; ELEV CHGS; ADD BOM

NOTES:

E. Z. BREEZE
253 SHERWOOD DRIVE
McMINNVILLE, TN. 37110

STRUCTURE	COUNTRY INN & SUITES
LOCATION	ORANGEBURG, SC
DETAIL	STAIRS
CUSTOMER	
ENGR OR ARCH	CONSTANTINE ARCHITECTS
DRAWN	SRB
DATE	6-25
CHECKER	SGL
DATE	6-25

PAIN	ONE STD SC RIP
CLEANING	
MATERIAL GRADE	A36 (UNO)
HOLES	1 3/16" U.NTD

SHOP ORDER	
SHEET NO.	M1
REV	2