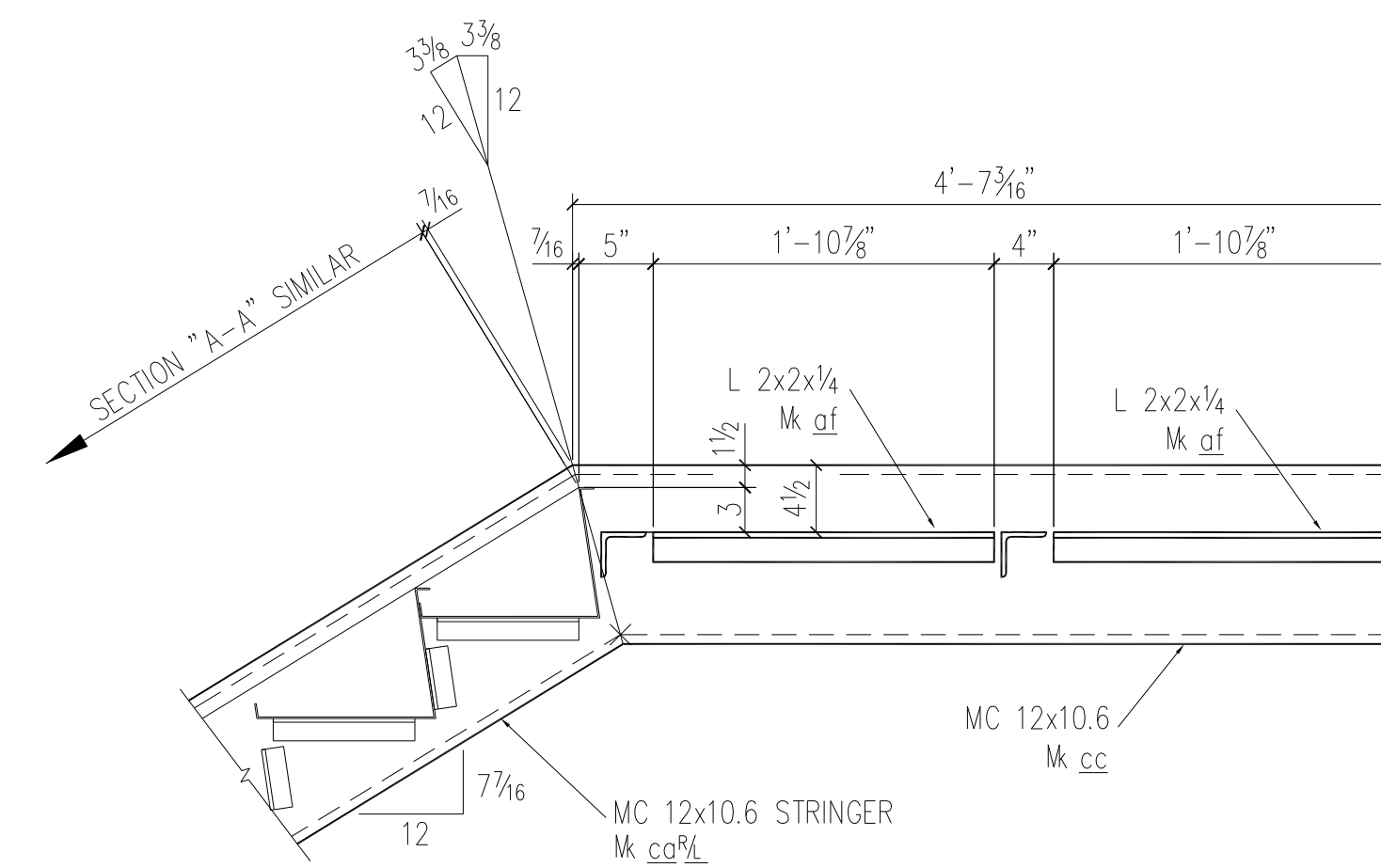
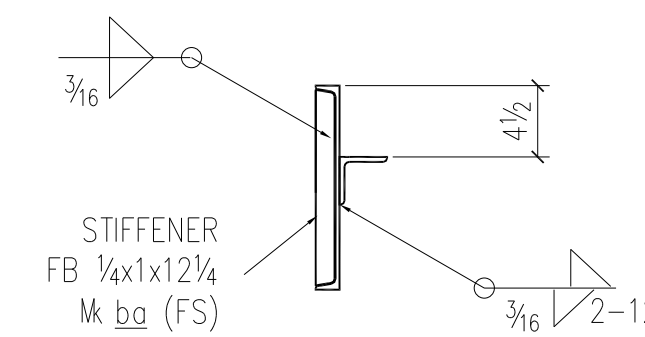


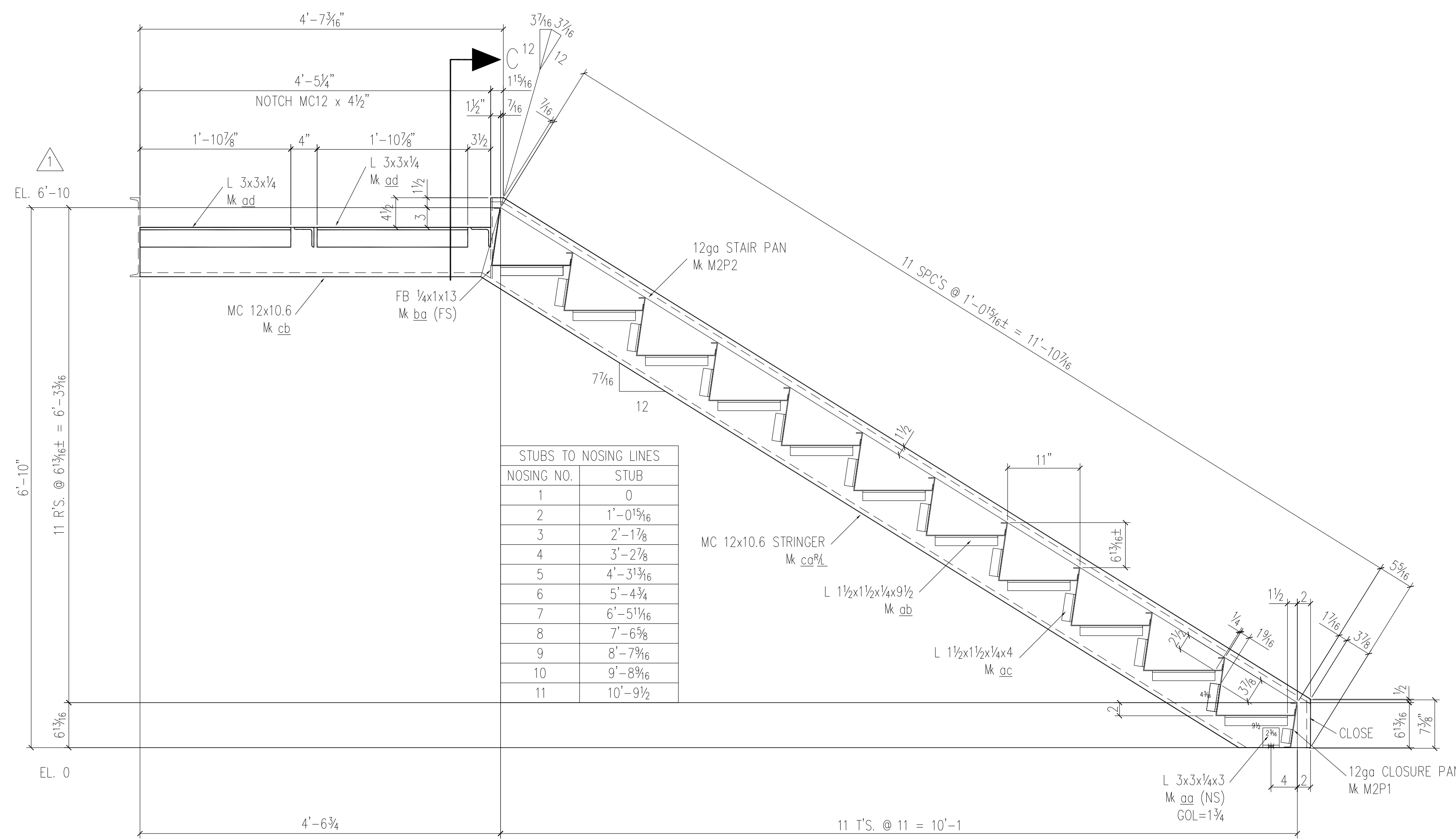
ONE STAIR - M2S1R (AS SHOWN)
ONE STAIR - M2S1L (OPP HAND)



SECTION "B-B"

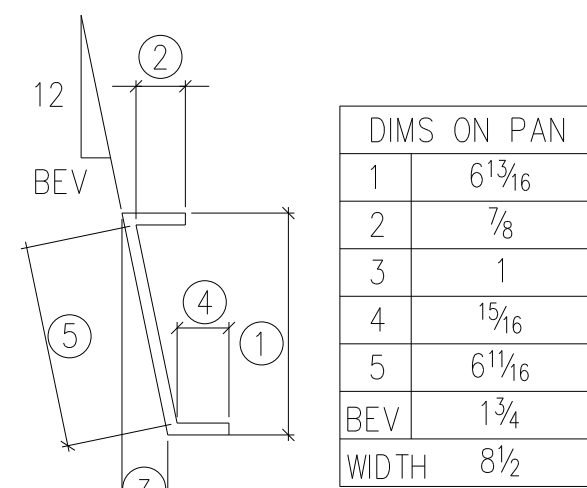


SECTION "C"

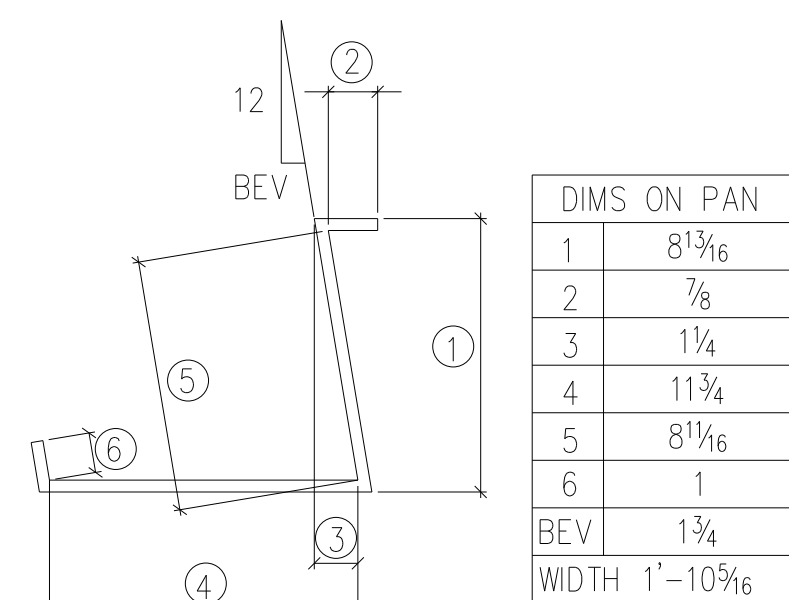


SECTION "A-A"

| STUBS TO NOSING LINES | STUB |
|-----------------------|------------|
| 1 | 0 |
| 2 | 1'-0 15/16 |
| 3 | 2'-1 7/8 |
| 4 | 3'-2 7/8 |
| 5 | 4'-3 15/16 |
| 6 | 5'-4 3/4 |
| 7 | 6'-5 15/16 |
| 8 | 7'-6 5/8 |
| 9 | 8'-7 9/16 |
| 10 | 9'-8 9/16 |
| 11 | 10'-9 1/2 |



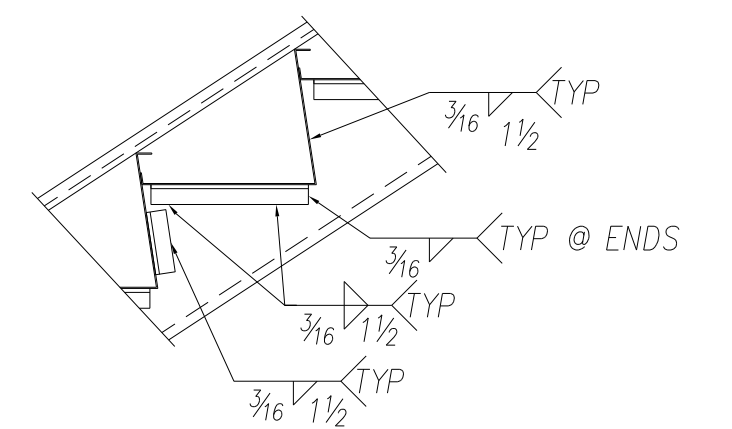
DETAIL OF BOTTOM PAN
(2) PLS REQ'D MARKED M2P1



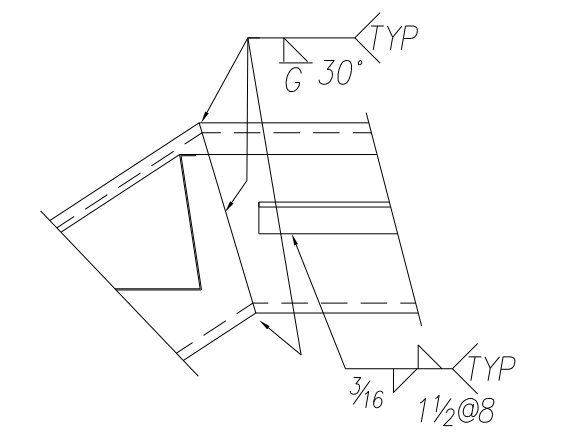
DETAIL OF STANDARD PAN
(22) PLS REQ'D MARKED M2P2

SHOP BILL

| SHIP MK | PC MK | QTY | DESCRIPTION | FT | IN | REMARKS | WEIGHT |
|---------|-------|-----|-----------------------|----|--------|---------|---------|
| M2S1R | ONE | ONE | STAIR ASS'Y | | | | |
| co | RL | 2/2 | MC12x10.6 | 12 | 4 3/16 | | 523.53 |
| cb | | 4 | MC12x10.6 | 4 | 7 3/16 | | 195.00 |
| cc | | 4 | MC12x10.6 | 4 | 7 3/16 | | 195.00 |
| oa | | 44 | L 1 1/2 x 1 1/2 x 1/4 | 0 | 9 1/2 | | 81.79 |
| ob | | 44 | L 1 1/2 x 1 1/2 x 1/4 | 0 | 4 1/2 | | 38.74 |
| oa | | 4 | L 3 x 3 x 1/4 | 0 | 3 | | 4.90 |
| ad | | 4 | L 3 x 3 x 1/4 | 1 | 10 7/8 | | 37.36 |
| oe | | 4 | L 3 x 3 x 1/4 | 4 | 6 5/8 | | 89.22 |
| of | | 4 | L 2 x 2 x 1/4 | 1 | 10 7/8 | | 24.39 |
| ba | | 2 | BAR 1/4 x 1 | 1 | 1 | | 1.84 |
| M2P1 | | 2 | 12 GA. x 8 1/2 | 4 | 6 5/8 | | 27.54 |
| M2P2 | | 22 | 12 GA. x 22 5/16 | 4 | 6 5/8 | | 795.33 |
| | | | TOTAL WEIGHT | | | | 1819.64 |



TYPICAL PAN WELDING AT ANGLE SUPPORTS



TYPICAL DETAIL AT DOGLEGS

| REVISIONS | BY | DATE | DESCRIPTION |
|-----------|-----|------|-------------------------|
| 3 | SRB | 7-16 | CORRECT STAIR WIDTH DIM |
| 2 | SRB | 7-11 | ELEV CHGS; ADD BOM |
| 1 | | | |

NOTES:

E. Z. BREEZE
253 SHERWOOD DRIVE
McMINNVILLE, TN. 37110

STRUCTURE: COUNTRY INN & SUITES
LOCATION: ORANGEBURG, SC
DETAIL: STAIRS

CUSTOMER: CEMS ENGINEERING

ENGR OR ARCH: SRB
DATE: 6-25

CHECKER: SGL
DATE: 6-25

SHEET NO. M2
REV 2

SHOP NOTES:
ALL STUBS ARE FROM FACE OF CLIP ANGLES
ALL HOLE SPACING 3" C/C UNLESS NOTED
ALL BLOCK SIZES FROM FACE OF CLIP ANGLES
ALL REAR ENTRANT CUTS HAVE A MINIMUM OF 1/2" RADIUS CUTS.

THIS PROJECT SHALL BE ERRECTED PER THE AISC CODE OF STANDARD PRACTICE SPECIFICALLY PARAGRAPH 7.12 AS FOLLOWS:
7.12 CORRECTION OF ERRORS
NORMAL ERECTION OF OPERATIONS INCLUDE THE CORRECTION OF MINOR MISFITS BY MODERATE AMOUNTS OF BEAMING, CHIPPING, WELDING OR CUTTING, AND THE DRAWING OF ELEMENTS INTO LINE THROUGH THE USE OF DRIFT PINS. ERRORS WHICH CANNOT BE CORRECTED BY THE FOREGOING MEANS OR WHICH REQUIRE MAJOR CHANGES IN MEMBER CONFIGURATIONS ARE TO BE REPORTED TO THE OWNER AND FABRICATOR BY THE ERECTOR. TO ENABLE WHOEVER IS RESPONSIBLE EITHER TO CORRECT THE ERROR OR TO APPROVE THE MOST EFFICIENT AND ECONOMIC METHOD OF CORRECTION TO BE USED BY OTHERS.
NO BACKCHARGES WILL BE ACCEPTED UNLESS APPROVED IN WRITING BY THIS OFFICE

APPROVAL AUTHORITY:
VERIFICATION OF DIMENSIONS, DETAILS, ETC. ARE REQUESTED WHERE INDICATED. IF EACH VERIFICATION IS NOT NOTED OTHERWISE, IT WILL BE ASSUMED TO BE CORRECT AS SHOWN.

VERIFY DIMENSION AND/OR DETAIL.