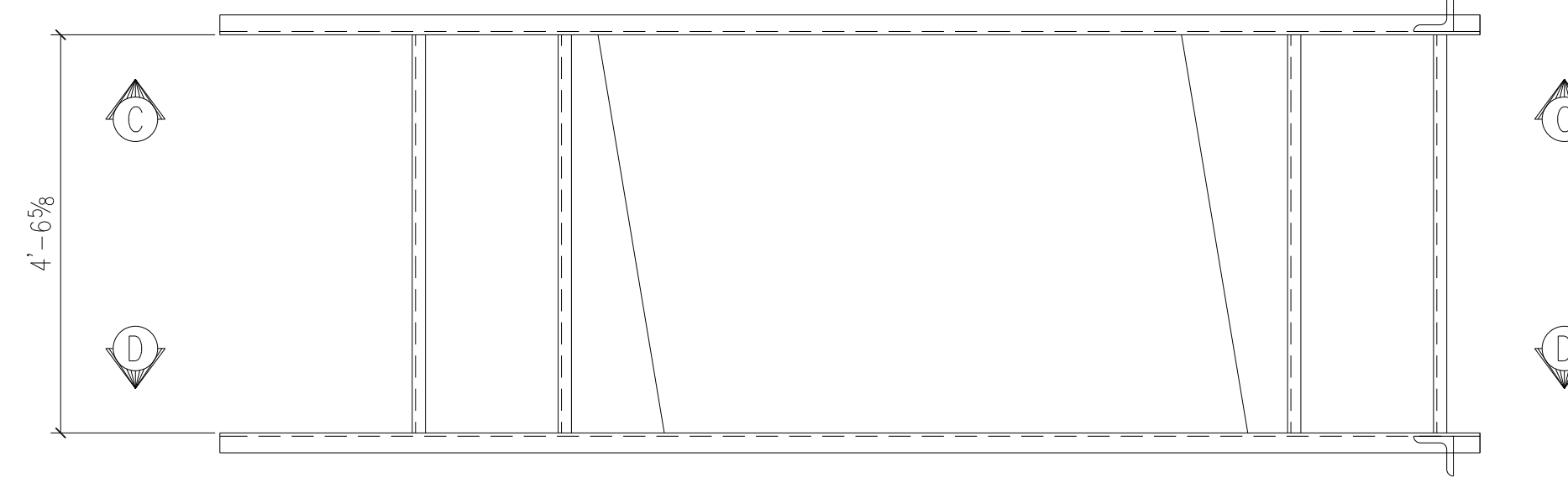
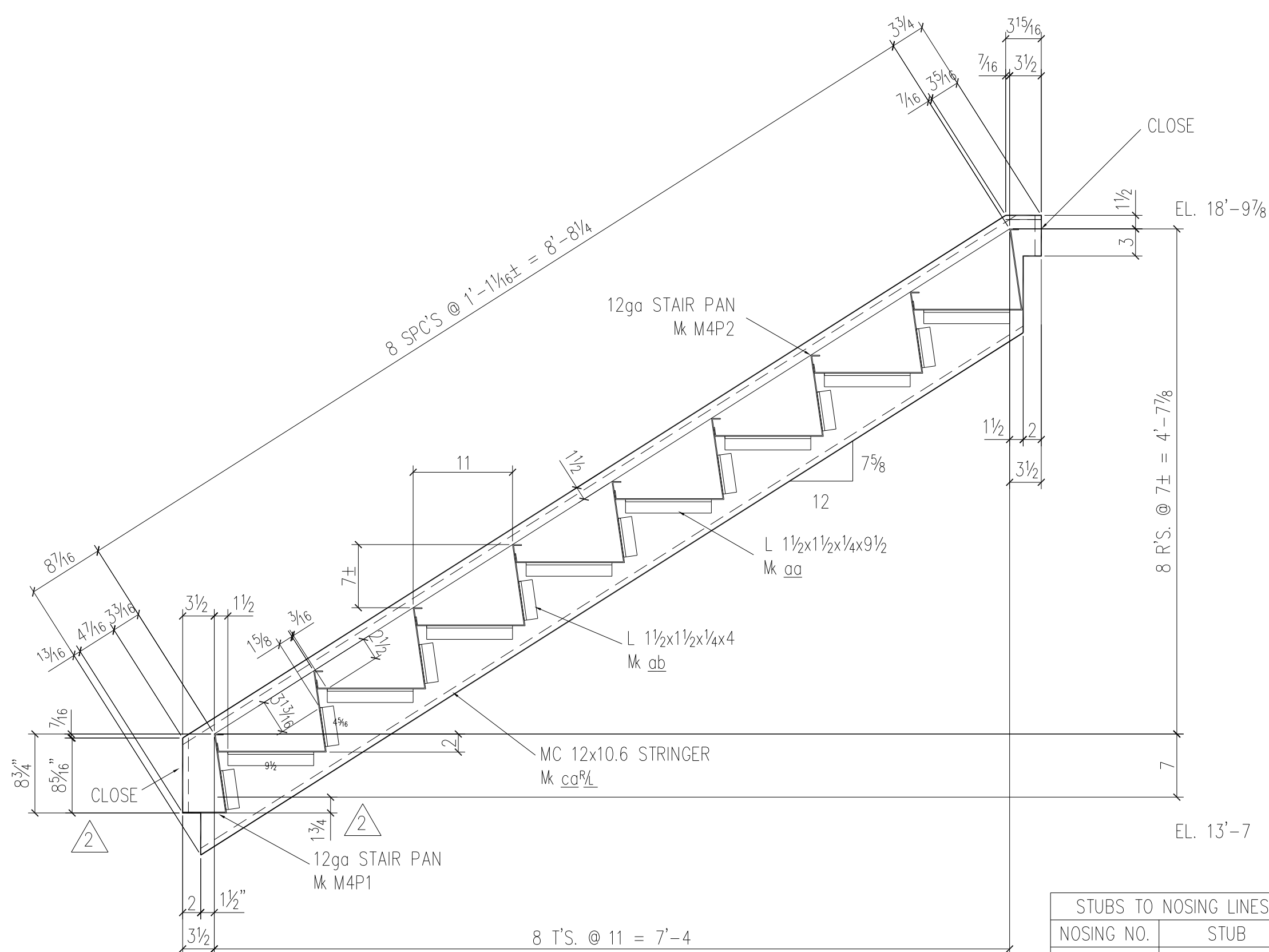


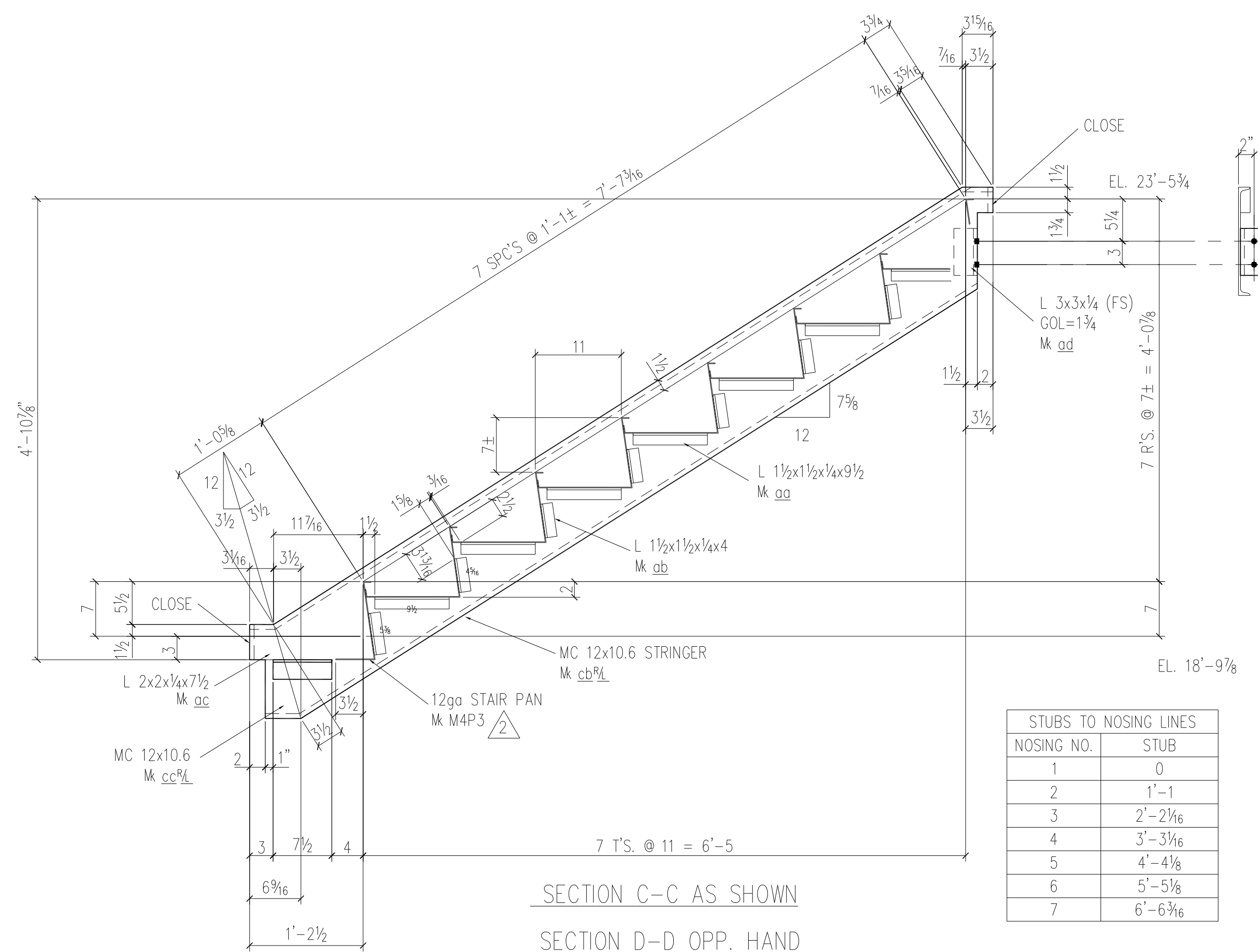
(4) STAIRS - M4S1



(4) STAIRS - M4S2

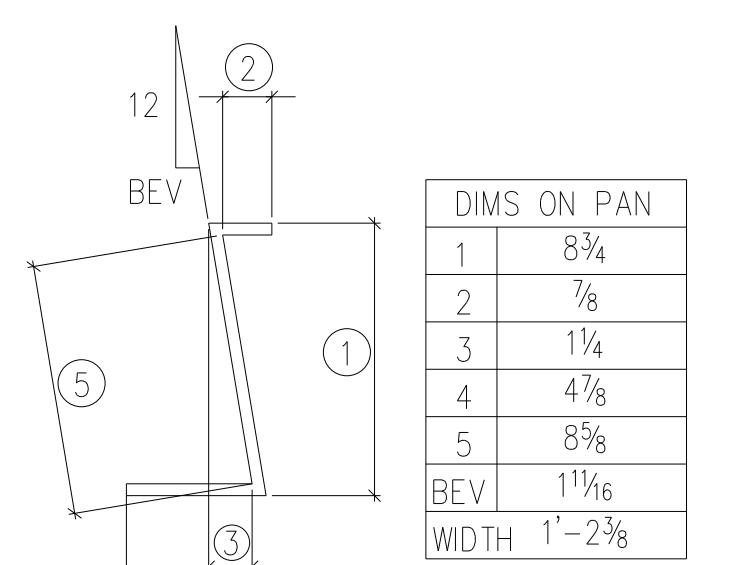


SECTION A-A AS SHOWN
SECTION B-B OPP. HAND

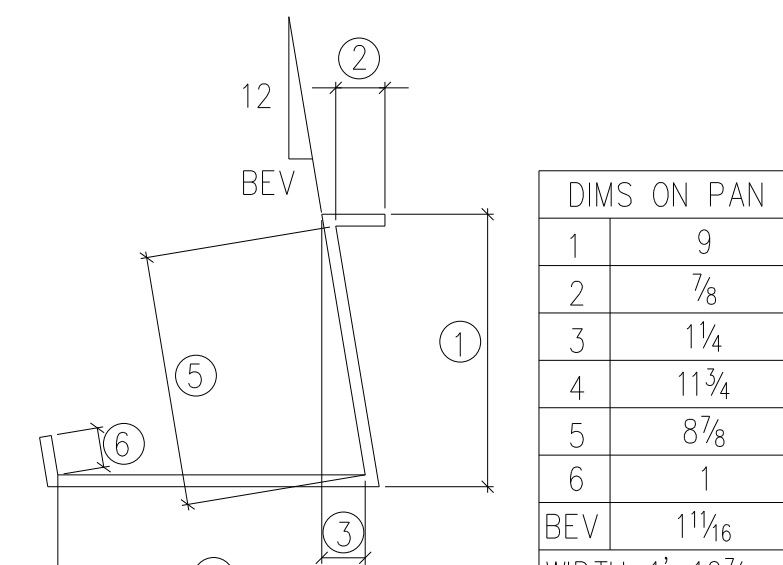


SECTION C-C AS SHOWN
SECTION D-D OPP. HAND

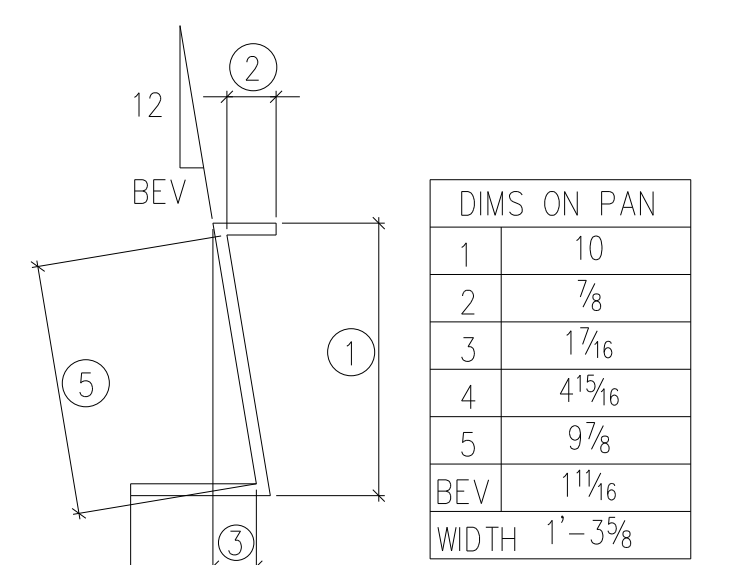
NOSING NO.	STUB
1	0
2	1'-1
3	2'-2 1/16
4	3'-3 3/16
5	4'-4 1/8
6	5'-5 1/8
7	6'-6 3/16



DETAIL OF BOTTOM PAN
(4) PLS REQ'D MARKED M4P1



DETAIL OF STANDARD PAN
(60) PLS REQ'D MARKED M4P2



DETAIL OF BOTTOM PAN
(4) PLS REQ'D MARKED M4P3

APPROVAL AUTHORITY:
VERIFICATION OF DIMENSIONS, DETAILS, ETC.
ARE REQUESTED WHERE INDICATED. IF EACH
VERIFICATION IS NOT NOTED OTHERWISE, IT
WILL BE ASSUMED TO BE CORRECT AS SHOWN.

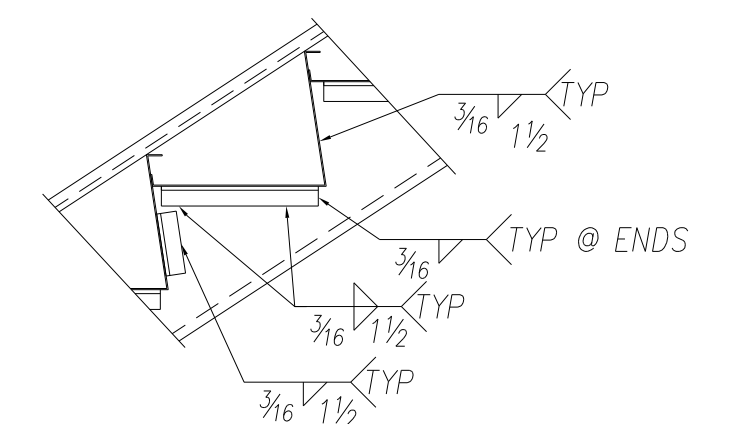
VERIFY DIMENSION
AND/OR DETAIL.

SHOP NOTES:
ALL STUBS ARE FROM FACE OF CLIP ANGLES
ALL HOLE SPACING 3" C/C UNLESS NOTED
ALL BLOCK SIZES FROM FACE OF CLIP ANGLES
ALL REAR ENTRANT CUTS HAVE A MINIMUM
OF 1/2" RADIUS CUTS.

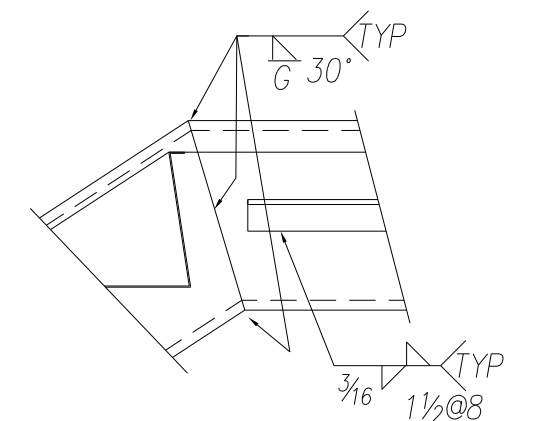
THIS PROJECT SHALL BE ERRECTED PER THE AISC CODE OF STANDARD PRACTICE SPECIFICALLY PARAGRAPH 7.12 AS FOLLOWS:
7.12 CORRECTION OF ERRORS
NORMAL ERECTION OF OPERATIONS INCLUDE THE CORRECTION OF MINOR MISFITS BY MODERATE AMOUNTS OF REAMING, CHIPPING, WELDING OR CUTTING, AND THE DRAWING OF ELEMENTS INTO LINE THROUGH THE USE OF DRIFT PINS. ERRORS WHICH CANNOT BE CORRECTED BY THE FOREGOING MEANS OR WHICH REQUIRE MAJOR CHANGES IN MEMBER CONFIGURATIONS ARE TO BE REPORTED TO THE OWNER AND FABRICATOR BY THE ERECTOR, TO ENABLE WHOEVER IS RESPONSIBLE EITHER TO CORRECT THE ERROR OR TO APPROVE THE MOST EFFICIENT AND ECONOMIC METHOD OF CORRECTION TO BE USED BY OTHERS.
NO BACKCHARGES WILL BE ACCEPTED UNLESS APPROVED IN WRITING BY THIS OFFICE

SHOP BILL

SHP MK	PC MK	QTY	DESCRIPTION	FT	IN	REMARKS	WEIGHT
M4S1		4	STAIR ASS'Y				
	caRL	4/4	MC12x10.6	9	8 7/8		825.91
	aa	64	L 1 1/2 x 1 1/2 x 1/4	0	9 1/2		118.96
	ab	64	L 1 1/2 x 1 1/2 x 1/4	0	4 1/2		56.35
	M4P1	4	R 12 GA. x 14 3/8	4	6 5/8		101.26
	M4P2	32	R 12 GA. x 22 7/16	4	6 5/8		1000.00
			TOTAL WEIGHT				2100.00
M4S2		4	STAIR ASS'Y				
	cbRL	4/4	MC12x10.6	9	3		784.60
	ccRL	4/4	MC12x10.6	0	6 3/16		46.30
	aa	56	L 1 1/2 x 1 1/2 x 1/4	0	9 1/2		104.09
	ab	56	L 1 1/2 x 1 1/2 x 1/4	0	4 1/2		49.31
	ac	8	L 2 x 2 x 1/4	0	7 1/2		15.99
	ad	8	L 3 x 3 x 1/4	0	6		19.60
	M4P3	4	R 12 GA. x 15 5/8	4	6 5/8		101.26
	M4P2	28	R 12 GA. x 22 7/16	4	6 5/8		1017.91
			TOTAL WEIGHT				2139.06



TYPICAL PAN WELDING
AT ANGLE SUPPORTS



TYPICAL DETAIL AT DOGLEGS

REVISIONS	BY	DATE	DESCRIPTION
3			
2	SRB	7-16	CHG P1 QTY & DIMS; ADD P3 PAN
1	SRB	7-11	ELEV CHGS; ADD BOM

NOTES:

E. Z. BREEZE
253 SHERWOOD DRIVE
McMINNVILLE, TN. 37110

STRUCTURE: COUNTRY INN & SUITES
LOCATION: ORANGEBURG, SC
DETAIL: STAIRS

CUSTOMER:

ENGR OR ARCH: CONSTANTINE ARCHITECTS

DRAWN	SRB	SHOP ORDER	SHEET NO.	REV
DATE	6-25		M4	2
CHECKER	SGL			
DATE	6-25			

PAIN: ONE STD SC RIP
CLEANING: _____
MATERIAL GRADE: A36 (UNO)
HOLES: 13/16\"/>